

## LIGHT ENGINE VIOLETTA UVC 140X23,5MM 240MW

Issue Date	October, 2023
Issued by	Nascimento, K.

### Applications

- Sterilization and purification

### Characteristics

- UV type: UV-C
- Wavelength 270nm – 280nm
- Efficacy - up to 4.2%
- 05 years warranty



### DRIVING CURRENTS

Parameter	Nominal	Max
Input Driving Current	350 mA	500 mA

### ELECTRICAL PARAMETERS

Parameter	Typical Value	Units
I	350	mA
V <sub>f,board</sub>	18	V

### MODULE TEMPERATURES

Parameter	Nominal	Max (on T <sub>c</sub> )
T <sub>c</sub> (temperature at T <sub>c</sub> point)	25°C	70°C

### PRODUCT PART NUMBER

**80573800100**

LIGHT ENGINE VIOLETTA UVC 140X23,5MM 210MW

### TECHNICAL INFORMATION

UV Type	Wavelength (nm)	#LEDs	Forward Current (mA)	Rad. Power* (mW)	Forward Voltage (V)	Power (W)	T <sub>j</sub> (°C)	Efficacy** (%)
UV-C	270-280nm	3	100	72	17.1	1.7	25	4.2
			350	240	17.7	6.2	25	3.9
			500	324	18.3	9.2	25	3.5

\*The specific radiant power of the LEDs may vary ± 7%.

\*\*Efficacy relates the electrical power consumed to the radiant power emitted

## LED TYPE

---

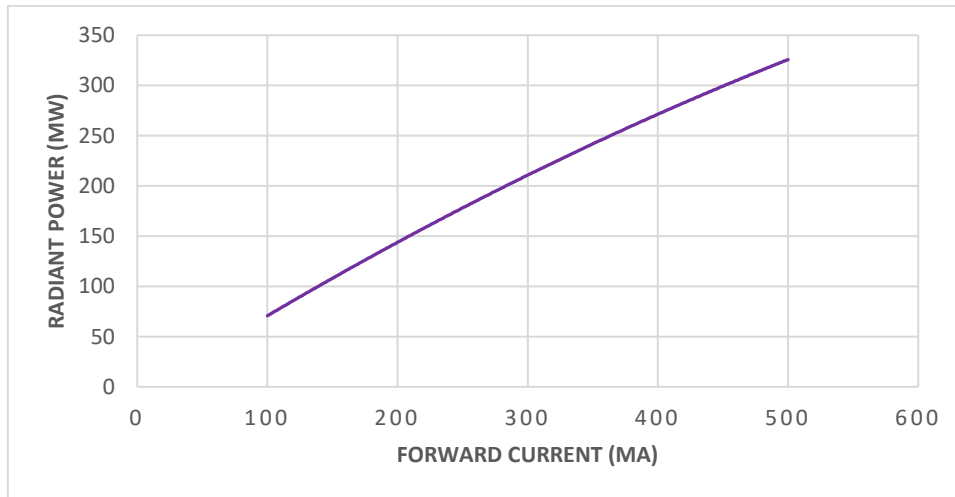
Manufacturer: CrayoNano

LED Series: CrayoLED™ H-Series (CLH-N3S)

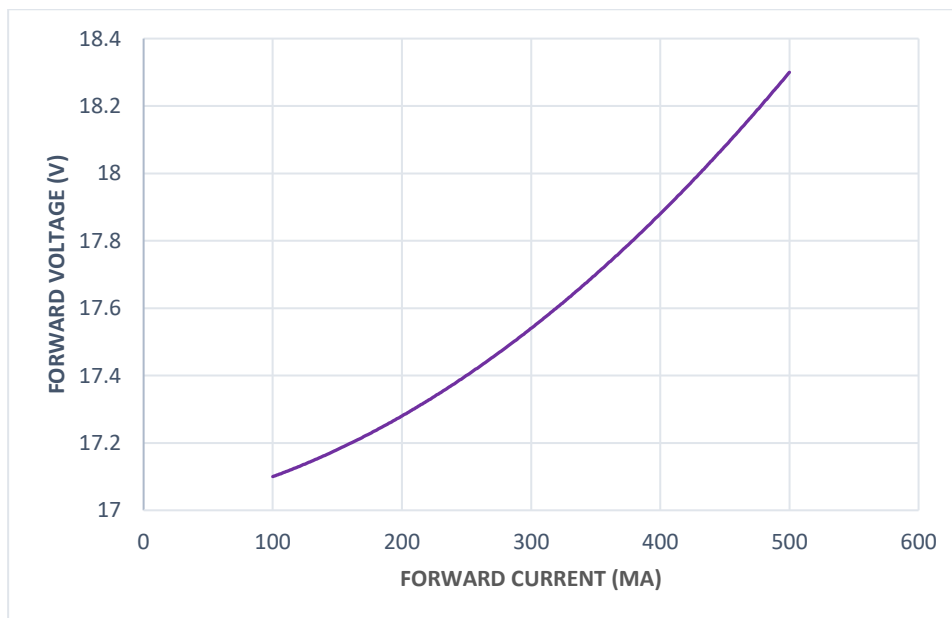
## TECHNICAL GRAPHS

---

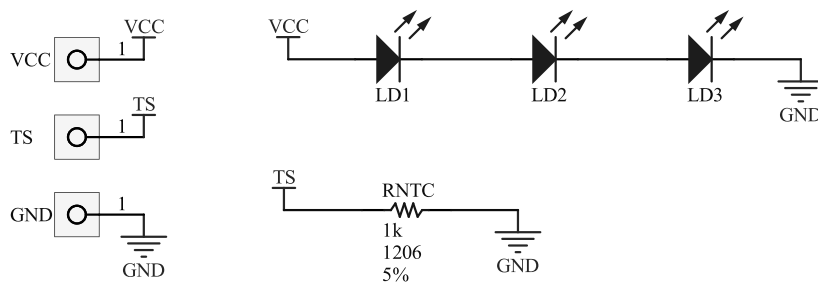
**Radiant Power (mW) x Forward Current (mA) ( $T_J$  25°C)**



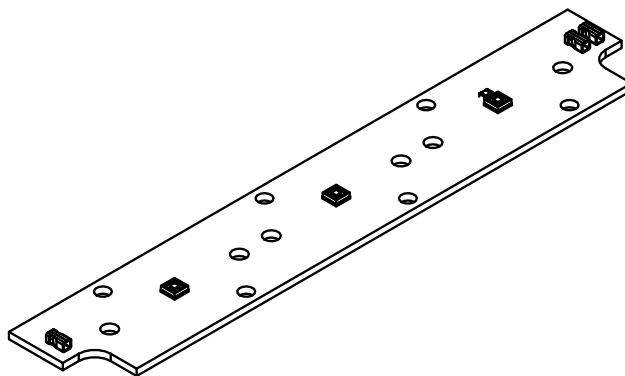
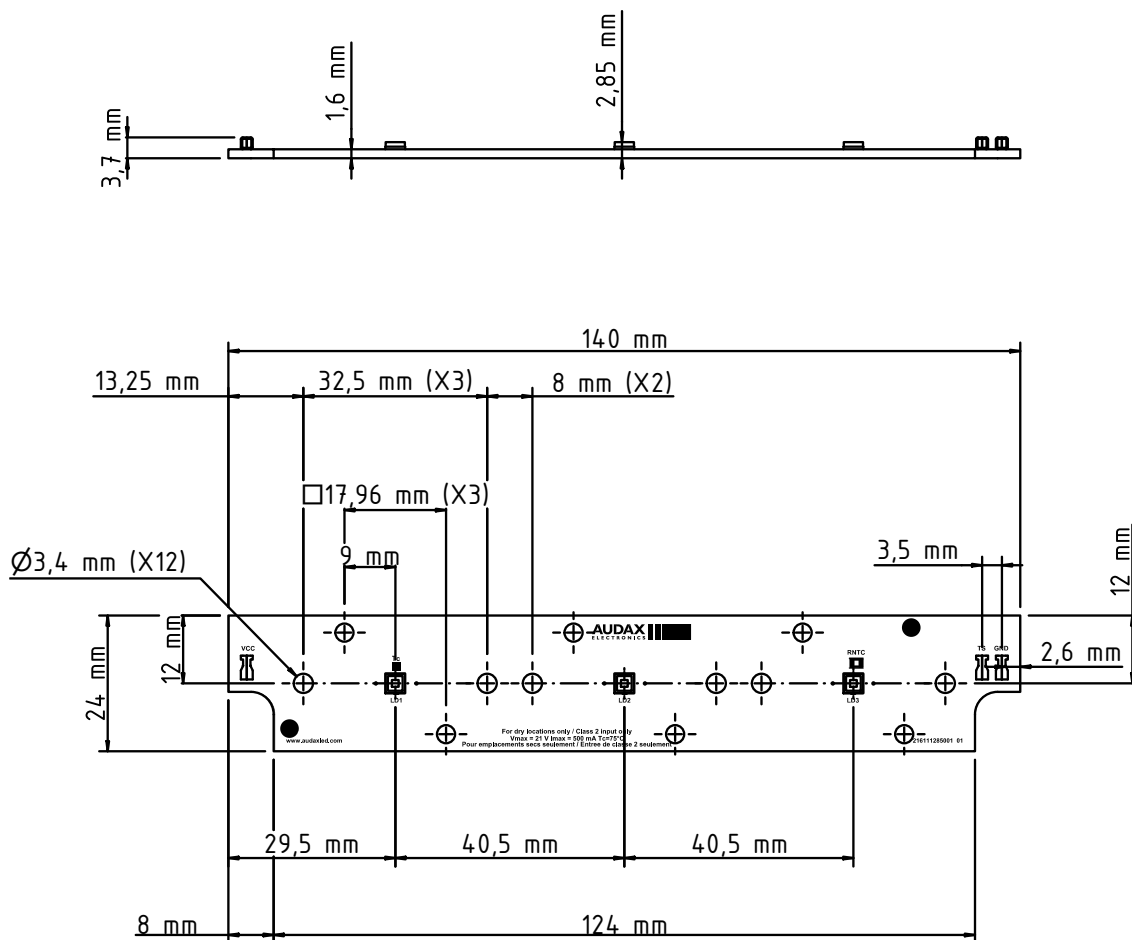
**Forward Voltage (V) x Forward Current (mA) ( $T_J$  25°C)**



## SCHEMATICS

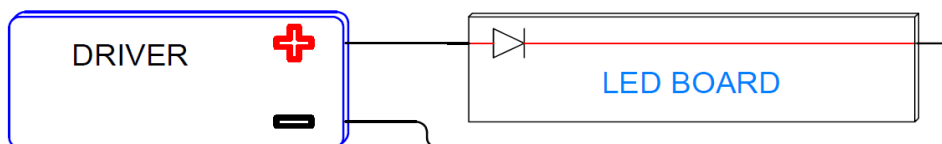


## MECHANICAL DRAWING



## WIRING

Specification item	Value	Unit	Condition
Input wire cross- section	0.25...0.75 18...24	mm <sup>2</sup> AWG	Solid wire
Input wire strip length	7.5...8.5	mm	Solid wire
Input wire cross-section	0.33...0.5 20...22	mm <sup>2</sup> AWG	Stranded wire
Input wire strip length	7.5...8.5	mm	Stranded wire



## COMPATIBLE OPTICS

Manufacturer	Part Number	Color	Optical loss	Beam
LEDiL	F17822_VIOLETTA-S	Clear	38%	~15°
LEDiL	F17826_VIOLETTA-W	Clear	48%	~60°

*\*Optical loss may vary ± 3%*

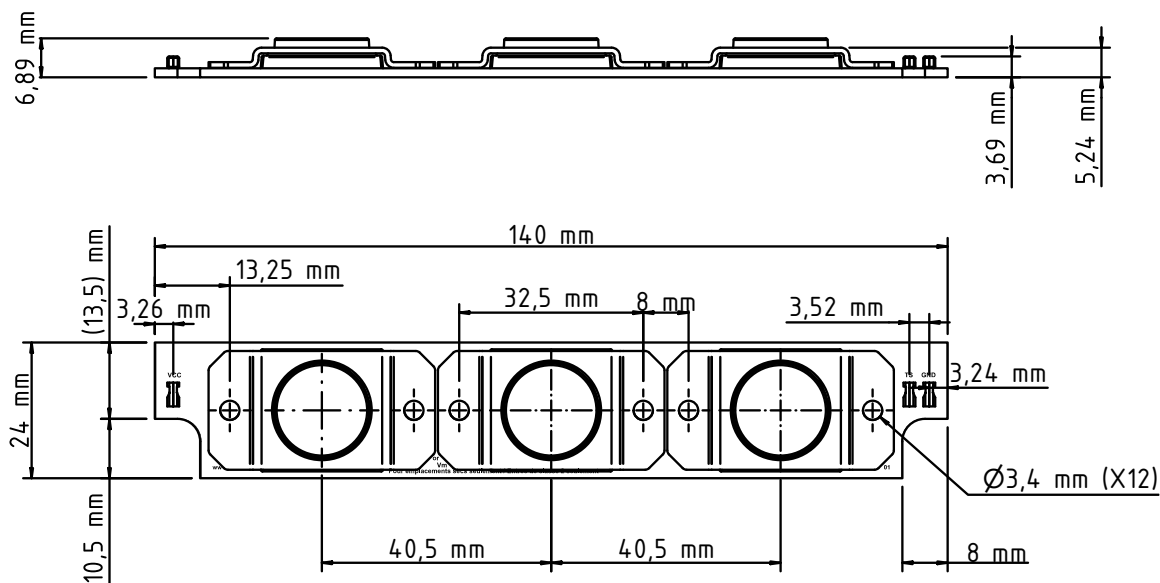


## COMPATIBLE FIXING METHOD

Manufacturer	Part Number	Color
LEDiL	F18002_VIOLETTA-FRAME	Natural



## ASSEMBLY EXAMPLE



## WARNING

**CAUTION**

**UVC EXPOSURE HAZARD  
DO NOT LOOK AT OR ENTER UNIT  
WITHOUT FIRST TURNING OFF  
ULTRAVIOLET LIGHTING**

© 2017 Audax LED