

LIGHT ENGINE UVC Ø24 240MW

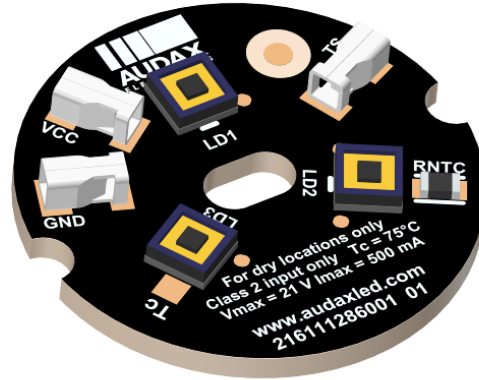
Issue Date	November, 2023
Issued by	Grassi, R.

Applications

- Sterilization and purification

Characteristics

- UV type: UV-C
- Wavelength 270nm – 280nm
- Efficacy - up to 4.2%
- 05 years warranty



DRIVING CURRENTS

Parameter	Nominal	Max
Input Driving Current	350 mA	500 mA

ELECTRICAL PARAMETERS

Parameter	Typical Value	Units
I	350	mA
V _{f,board}	18	V

MODULE TEMPERATURES

Parameter	Nominal	Max (on T _c)
T _c (temperature at T _c point)	25°C	70°C

PRODUCT PART NUMBER

80573900100

LIGHT ENGINE UVC Ø24X1,6MM 210MW

TECHNICAL INFORMATION

UV Type	Wavelength (nm)	#LEDs	Forward Current (mA)	Rad. Power* (mW)	Forward Voltage (V)	Power (W)	T _j (°C)	Efficacy** (%)
UV-C	270-280nm	3	100	72	17.1	1.7	25	4.2
			350	240	17.7	6.2	25	3.9
			500	324	18.3	9.2	25	3.5

*The specific radiant power of the LEDs may vary ± 7%.

**Efficacy relates the electrical power consumed to the radiant power emitted

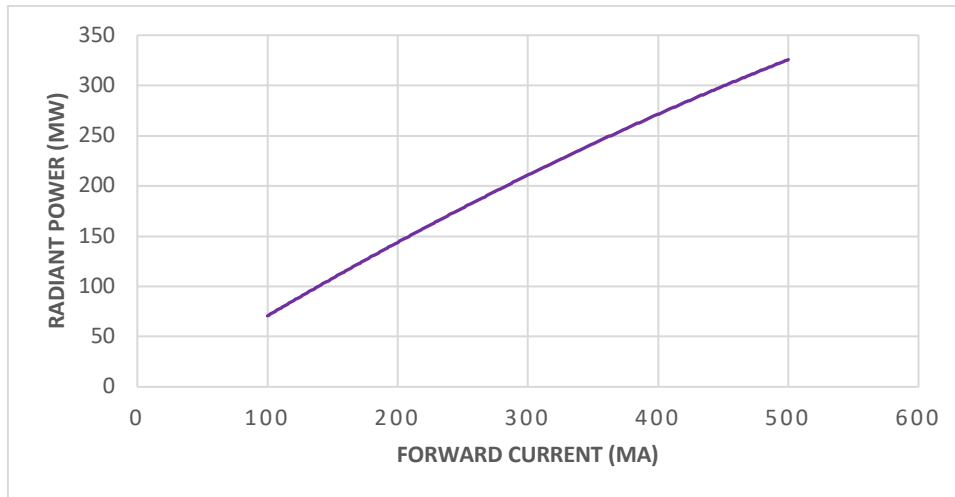
LED TYPE

Manufacturer: CrayoNano

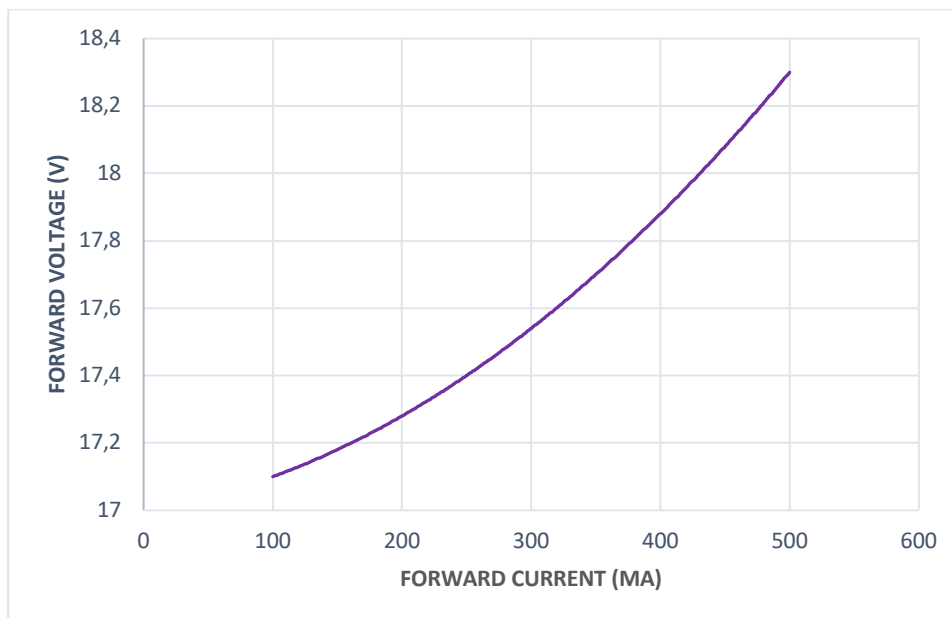
LED Series: CrayoLED™ H-Series (CLH-N3S)

TECHNICAL GRAPHS

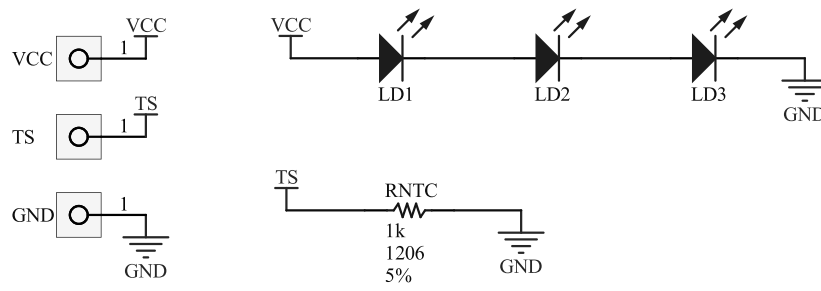
Radiant Power (mW) x Forward Current (mA) (T_J 25°C)



Forward Voltage (V) x Forward Current (mA) (T_J 25°C)



SCHEMATICS



MECHANICAL DRAWING

